



## REPAIR INFO FOR Transmission Systems

Part Numbers: 804102, 821071, 826577, 826578, 826898,  
842071, 842577

### SELF-ALIGNING CLUTCH RELEASE BEARING

The Valeo Technical hotline are often asked why the inner carrier of a conventional clutch release bearing is not central with it often being mistaken as a manufacturing defect.

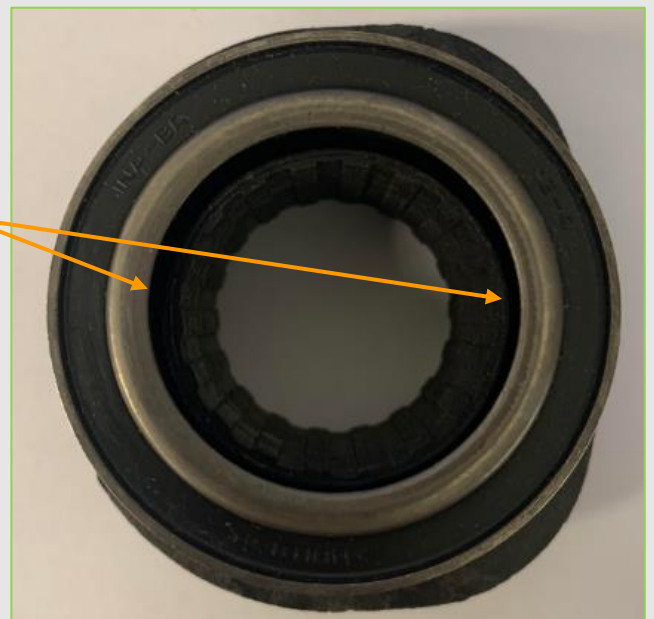
In these instances the bearing in question is a self-centering or self-aligning release bearing and the inner carrier is designed to sit off centre. A self-aligning clutch release bearing is designed to control certain clutch conditions associated with the misalignment of driveline components. The self-aligning clutch release bearing allows a perfect distribution of engage / disengage load to the clutch diaphragm spring fingers. This effective load distribution creates a better opening and closing balance with the pressure plate over the clutch disc, thus providing stable torque transfer between the engine and drivetrain, and reducing vibration throughout the system and specifically, in the clutch pedal.

The advantages of a self-aligning clutch release bearing are:

- Immediate self-aligning at initial engagement
- Retention of alignment
- Less noise and vibration
- Reduced wear on pressure plate fingers
- Reduced internal bearing friction resulting in less lubrication breakdown, giving a longer service life

By inserting two fingers or thumbs into the inner carrier of the bearing, it can be moved from side to side.

*Self-centering/aligning  
bearing with the inner  
carrier off center*



For more information, see the Valeo Self-Aligning Bearings webinar on our dedicated TechAssist portal at:  
<https://webinars.on24.com/Valeo/SelfAligningBearings>



More information on:  
[www.valeoservice.co.uk](http://www.valeoservice.co.uk)



Technical Hotline:  
**01527 835300 EXT 2**

Smart care for you  
[valeoservice.com](http://valeoservice.com)